

EUROPE

LIEGE SCIENCE PARK • 4102 Seraing • BELGIUM • Tel.: +32 4 372 74 00
• Fax: +32 4 372 75 00 • Toll-free: + 800 666 00 123 • info@eurogentec.com
• www.eurogentec.com

NORTH AMERICA

ANASPEC - 34801 Campus Drive • Fremont, CA 94555 • USA • Tel.: +1-510-791-9560
• Toll-free: +1 800-452-5530 • Fax: +1 510-791-9572 • service@anaspec.com
• www.anaspec.com

Technical Data Sheet

iD Broad Pre-stained Protein Weight Marker ID-MWBPS1-250

Eurogentec products are sold for research or laboratory use only and are not to be administered to humans or used for medical diagnostics.

Product

Cat #	Description	Size
ID-MWBPS1-250	iD Broad Pre-stained Protein Weight Marker	250 µL

Description

The iD Broad Pre-stained Protein Weight Marker ensures proper identification of each protein and facilitates visualisation with high resolution.

It consists of ten highly purified pre-stained proteins in the range of 5 to 270 kDa.

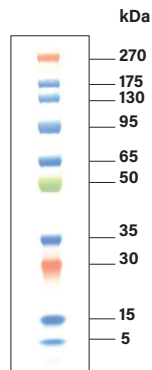
The bands are covalently coupled to 4 different dyes:

- 30 kDa band is red
- 50 kDa band is green
- 270 kDa band is orange
- 5 kDa, 15 kDa, 35 kDa, 65 kDa, 95 kDa, 130 kDa and 175 kDa bands are blue.

The blue bands can hence be detected using the iD BlueLadder Revealers, which stain the blue colour used in Molecular Weight Markers.

The iD Broad pre-stained Protein Weight Marker is supplied in gel loading buffer and can be loaded directly onto a SDS-PAGE gel.

■ 5 µL of iD Broad protein weight marker were loaded on a 4-20% SDS-PAGE (160 V for 60 minutes), then transferred onto a nitrocellulose membrane.



Usage

Mix well before use. We recommend loading 5 µL Marker on mini gels. Bands intensity may vary according to the gel type, thickness, and staining condition. Please adjust the volume from 2.5 µL to 10 µL. Do not boil the MW Marker before use.

Storage

The MW Marker can be stored at -20°C for 12 months. It is recommended to prepare small volume aliquots.

For further information please contact our Customer Help Desk:

For Europe:

E-mail: info@eurogentec.com
Tel: +32 4 372 76 65

For USA:

E-mail: service@anaspec.com
Tel: +1 510 791 9572