



Product Data Sheet

Product Name: EndoClear™* Human Recombinant alpha-Synuclein Protein (< 0.1 EU per µg protein)

Catalog Number: AS-55555 **Lot Number:** See label on the vial

Amount/size: 100 µg, 500 µg, 1000 µg

Source: The sequence (Accession # NP_000336) corresponding to the full length human α-synuclein protein was expressed in *E. coli*. The recombinant α-synuclein protein was purified from bacterial lysate using proprietary method. The molecular weight of the recombinant α-synuclein protein is ~14.5 kDa.

Activity: α-synuclein was assayed for the fibrillation properties using Thioflavin T assay.

Applications: Fibrillation, oligomerization, cell toxicity studies.

Purity: Greater than 90% as determined by SDS-PAGE.

Endotoxin: Less than 0.1 EU per µg protein as tested by LAL method.

Storage: The purified α-synuclein is supplied as lyophilized powder nearly salt free. Store at 2-4 °C for immediate use within 1-2 weeks or at -80 °C for up to 12 months.

*previously named EndoFree Human Recombinant alpha-synuclein Protein

Instructions: α-synuclein is a major component of Lewy bodies in the affected neurons in Parkinson's disease.¹⁻⁴ This protein has a mass of 14.5 kDa (140 amino acids long) and consists of a conserved degenerative amino-terminal domain and an acidic carboxyl-terminal with higher sequence divergence.¹⁻⁴ α-synuclein is predominantly expressed in brain: specifically in cerebellum, thalamus, neocortex, hippocampus, and striatum regions.¹⁻² Other tissues express α-synuclein at very low levels.¹⁻⁴ The physiological role of α-synuclein is not yet well understood. However, the presence of imperfect KTKEGV lipid interacting repeats suggests that it may be involved in synaptic vesicle homeostasis.³

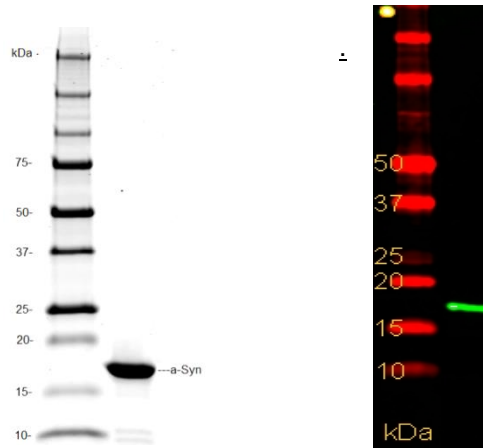


Figure 1.

Figure 2

Figure 1. Human α-synuclein on SDS-PAGE. Purified protein was loaded onto 10-20% Tris-HCl gel at 3 µg/well.

Figure 2. Western Immunoblot of α-synuclein. Purified α-synuclein protein was probed with anti- α-synuclein specific antibody.

Related Products:

Product Name	Cat. #
Recombinant human α - Synuclein (1 - 140), HiLyte Fluor™488 labeled	AS-55457
Recombinant Human β - Synuclein (1 - 134)	AS-55458-100 AS-55458-500 AS-55458-1000
Sensolyte® Anti-α-Synuclein (Human) ELISA Kit	AS-55550-H
Sensolyte® Anti-α-Synuclein (Rat) ELISA Kit	AS-55550-R
EndoClear™* Mouse Recombinant alpha - Synuclein	AS-56082-100 AS-56082-500 AS-56082-1000
EndoClear™Plus Recombinant Human alpha - Synuclein	AS-56081-100 AS-56081-500
Recombinant human α - Synuclein (1 - 140), biotin labeled	AS-55581
EndoClear™ Rat Recombinant alpha - Synuclein	AS-56083-100 AS-56083-500 AS-56083-1000

References:

1. Rivers, R. et al. *Protein Science* **17**, 887-898 (2008).
2. Bruening, W. et al. *Cancer*. **88**, 9, 2154-2163 (2000).
3. George M. J. *Genome Biology* **3**, 1, 1-6 (2001).
4. Latawiec, D. et al. *PLoS ONE* **5**, 2, 1-8 (2010).

For Research Use Only!