

# PEPTIDE MASS STANDARD KIT

34801 Campus Dr. • Fremont, CA 94555 • 800-452-5530 • Fax 510-791-9572 • service@anaspec.com • www.anaspec.com

**Catalog # - AS-60882**

**Unit Size - 1 Kit**

This kit consists of two calibration mixtures for calibrating mass scale in MALDI-TOF or ESI mass spectrometry. Calibration Mixture 1 ranges from 900 to 1674 daltons, and Calibration Mixture 2 from 2095 to 3700 daltons.

## KIT COMPONENTS, STORAGE AND HANDLING

Store all kit components at 4°C. Long term storage of reconstituted peptide is not recommended.

Component A: Calibration Mixture 1 (1 vial)

Component B: Calibration Mixture 2 (1 vial)

Component C: Standard Diluent (30% Acetonitrile in 0.1% TFA, 250 µl)

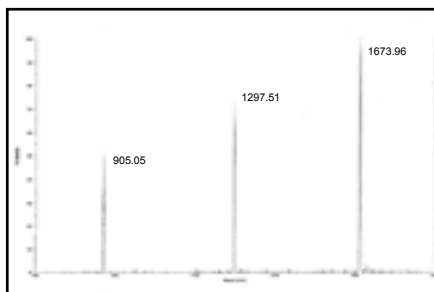
Component D: Matrix ( $\alpha$ -Cyano-4-hydroxycinnamic acid, 2 vials)

Component E: Matrix Diluent (50% Acetonitrile in 0.1% TFA, 1 ml)

## STANDARD OPERATION PROCEDURE

1. Reconstitute Calibration Mixture 1 and Calibration Mixture 2 each in 100 µl of Standard Diluent (Component C).
2. Prepare matrix solution by dissolving 1 vial of Component D in 100 µl of matrix diluent (Component E).
3. Mix 24 µl of matrix solution with 1 µl of Calibration Mixture 1 or 1 µl of Calibration Mixture 2 to obtain Matrix:Standard solutions. Load 1 µl per sample position.

### Calibration Mixture 1



### Name

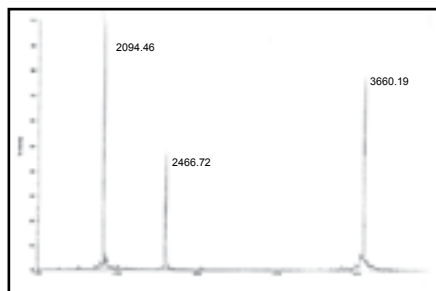
**(M+H)<sup>+</sup>  
Average**

**(M+H)<sup>+</sup>  
Monoisotopic**

### Calibration Mixture 1:

Des-Arg1-Bradykinin	905.05	904.47
Angiotensin I	1297.51	1296.68
Neurotensin	1673.96	1672.92

### Calibration Mixture 2



### Calibration Mixture 2:

ACTH (clip 1-17)	2094.46	2093.09
ACTH (clip 18-39)	2466.72	2465.20
ACTH (clip 7-38)	3660.19	3657.923